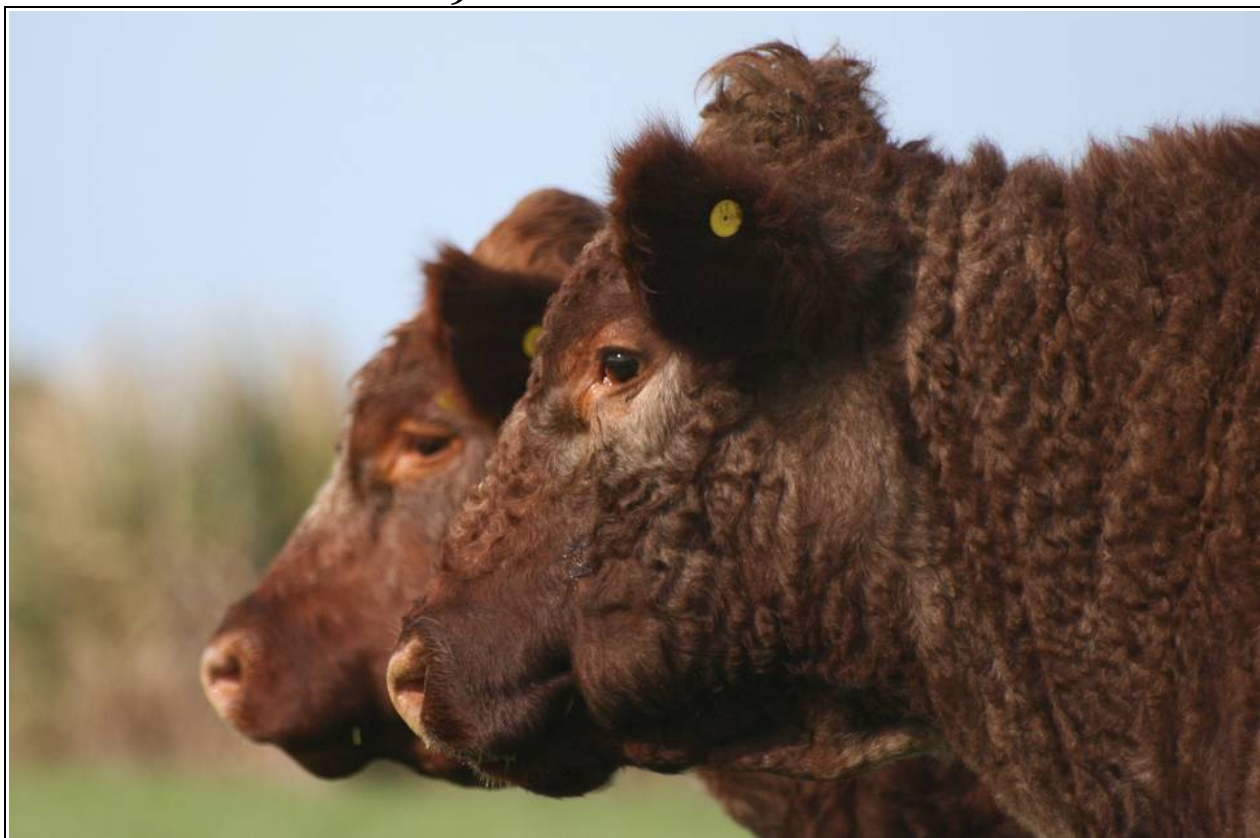


**GLENROSSIE**  
***Beef Shorthorn and Santa Gertrudis Stud***

**29<sup>th</sup> ANNUAL BULL SALE**



**to be held on the property of Ody Bros Ltd  
405 Ody Road, Taurikura, Whangarei Heads  
and online via Bidr**

**Friday 27th of June 2025 - Auction starts 1.00pm**

**David (Fred) and Tracy Ody  
Fred  
Tracy**

**09 434 0987  
027 4340 987  
027 543 1045**

**View sale bulls online including photos and videos at  
[www.glenrossie.co.nz](http://www.glenrossie.co.nz)**

**OFFERING COMPRISES OF  
18 R2yr Beef Shorthorn Bulls  
6 R2yr Santa Gertrudis Bulls**

**AUCTIONEERS PGG WRIGHTSON LTD  
Bernie McGahan  
A/H 09 425 7102 or 0275 902 210**

## CONDITIONS OF SALE

- The sale will be conducted in accordance with conditions of sale set down by the Northland Stock and Station Agents Association - a copy of which will be exhibited at the sale.
- **RISK:** Each lot will be at the risk of the purchaser as from the fall of the hammer. No errors or omissions in this catalogue will in any way invalidate the sale.
- **FINANCE:** Terms are cash before delivery unless credit arrangements have been made with the Auctioneers prior to sale.
- All bulls in this catalogue are guaranteed fertile.
- This herd is Tuberculosis and Brucellosis accredited.
- Buyers are advised to complete the instruction slip in the back of the catalogue as to transport, insurance and transfers.
- An over-riding commission of 6% is payable to non-participating Companies introducing buyers prior to the sale.

### DISCLAIMER

All details and descriptions as to stock referred to in this catalogue have been supplied to PGG Wrightson by the Vendor and have not been independently verified by PGG Wrightson. PGG Wrightson, its employees and agents make no representations or warranties or acknowledgement of any kind whatsoever in relation to any part of this catalogue (including but not limited to the accuracy or completeness of details and descriptions of stock [and other contents]).

Purchasers, advisors and all other persons viewing or dealing with the stock must make their own assessment and judgement on the stock and the information in this catalogue.

PGG Wrightson, its employees and agents are not responsible or liable in any way whatsoever, whether in contract, tort (including negligence), or otherwise, to any person for any loss or damage whatsoever arising directly or indirectly from any information or representation included in or omitted from this catalogue.

### CONDITIONS FOR BULL AUCTIONS CONDUCTED LIVE AT A SALEYARD/ON FARM

All intending purchasers must register at the PGG Wrightson Ltd Livestock (PGW) sales office prior to the sale.

The New Zealand Stock & Station Agent's Association Conditions of Sale apply. These terms can be inspected at the registration desk and on the wall in the auction room.

PGW's Monthly Account Terms of Trade also apply to the extent deemed relevant by PGW.

The current versions of PGW's Monthly Account Terms of Trade are also available online at: [www.pggwrightson.co.nz/Our-Company/Terms-and-Conditions](http://www.pggwrightson.co.nz/Our-Company/Terms-and-Conditions) or in hardcopy on request.

On behalf of the vendor, PGW will pay a purchasing rebate of 6% of the purchase price excluding GST, plus GST, to livestock companies and recognised independent livestock agents with a PGW Monthly Account who have introduced buyers to PGW before the sale and/or accompanied buyers to the sale.

### CONDITIONS FOR BULL AUCTIONS CONDUCTED ON bidr®

All intending purchasers must register online at [www.bidr.co.nz](http://www.bidr.co.nz) prior to the sale.

bidr®'s Conditions of Sale and Terms of Use apply. These terms can be inspected at <https://bidr.co.nz/content/user-terms-conditions>

PGW's Monthly Account Terms of Trade also apply to the extent deemed relevant by PGW.

The current versions of PGW's Monthly Account Terms of Trade are also available online at: [www.pggwrightson.co.nz/Our-Company/Terms-and-Conditions](http://www.pggwrightson.co.nz/Our-Company/Terms-and-Conditions) or in hardcopy on request.

On behalf of the vendor, PGW will pay a purchasing rebate of 6% of the purchase price excluding GST, plus GST, to livestock agents with a PGW Monthly Account that are also Accredited Agencies on bidr® where the buyer has registered on bidr® under that Accredited Agency.

## Foreword

The Glenrossie Beef Shorthorn Stud was founded in 1969 with the purchase of Stud Loch females from Malcolm Anderson along with the imported bull Burnton Banter.

We have continued to use top Australian (AI) and New Zealand sires, including 2002 National Sale Beef Shorthorn Champion Austins Ideal 007 and 2013 National Sale Beef Shorthorn Champion Corsock Dazzler 11384. Our commitment to quality has never changed.

Our Santa Gertrudis cattle were originally graded up from selected Beef Shorthorn females and have been bred to the same commercial criteria as our Beef Shorthorns.

Current Sires are:

Browns Unique 010

Hinewaka Gold 71/18

Waco Morris (AI)

Glenrossie Morris R20103

Polldale Neat N38 (AI)

Glendhu Parkinson 20 10

Glendhu Papalii 20 17

Our aim has always been to breed structurally sound, well fleshed, fast growing bulls for commercial beef producers. Our cattle are run under commercial conditions on grass, silage and hay only.

We use utes, dogs and we work our cattle on foot. We do not use bikes or horses so please remember that the bulls will need time to get used to them. When your bull arrives please have a few quiet steers or in calf cows in the yards as mates for him. Put him and his mates in a smallish paddock with plenty of grass and feed him some hay or silage for the first week or two until he gets used to you and the routine on your farm.

We offer free delivery north of the Harbour Bridge and have added concessions for buyers further afield.

Bulls are TB accredited C10 and have been BVD tested and vaccinated. Bulls are fully guaranteed for 12 months from the date of purchase for structural soundness and fertility - if there is any problem, we want to know about it so we can fix it.

We do not do stud transfers for bulls with a purchase price less than \$5000.

**PLEASE NOTE:** When reading tables of data, the bottom row is ACTUAL weights and scanning data. The dates are the date of weighing. Scanning date was 11/02/24.

This sale will be a hybrid sale, live streamed on bidr. Any questions please ask us and we will be happy to help.

The Ody family.

## Understanding Estimated Breed Values (EBVs)

Only 2025 Trans-Tasman Shorthorn GROUP BREEDPLAN EBVs or interim EBVs with Accuracy (Acc) can be validly compared between Shorthorn herds.

### EBVs OF ONE BREED CANNOT BE COMPARED WITH EBVs OF ANOTHER BREED.

**ESTIMATED BREEDING VALUES (EBVs):** The EBV is an estimate of the genetic value of that particular animal for each trait measured.

**ACCURACY:** Accuracy (%) gives an indication of the amount of information that has been used in the calculation of that EBV. An accuracy of below 75% should be regarded as low, between 76-90% as medium and above 90% as high. Young bulls with performance data but no progeny will all have similarly low accuracies.

Average EBVs for 2023 born animals

CE DI	CE DT	GL	BW	200D	400D	600D	MCW	MILK
+1.6	+1.9	-1.7	+3.0	+28	+40	+52	+47	+6
SS	CWT	EMA	RIB	RUMP	RBY	IMF	SR	DI
+1.5	+35	+4.4	-0.2	+0.1	+0.9	+0.5	+\$114	+\$62

#### CALVING EASE:

Calving Ease EBVs(%) are based on calving difficulty scores, birth weights and gestation length information. More positive EBVs indicate easier calving. **DI**=animal's influence on progeny. **DT**=daughter's calving ease.

**GL:** Gestation Length EBV. Lower or negative values indicate a shorter gestation length, therefore easier calving.

**BWT:** Birth Weight EBV (kg) is based on the measured birth weight of animals, adjusted for dam age. The lower the value, the lighter the calf at birth and the lower the likelihood of a difficult birth. Important when selecting sires for use over heifers.

#### FERTILITY:

**SS:** Scrotal Size EBV (cm) is an indicator of male fertility in regards to semen quality and quantity. Higher (positive) EBVs indicate higher fertility. SS is also positively associated with female fertility.

#### GROWTH:

**MILK:** 200-Day Milk EBV (kg) is an estimate of the animal's milking ability. For sires, this EBV is indicative of their daughters milking ability as it affects the 200 and 400 day weight of their calves.

**200W:** 200-Day Growth EBV (kg) is calculated from the weight of animals taken from 80 to 300 days of age. Values are adjusted to 200 days and for age of dam. Best estimate of an animal's genetic merit for growth to early stages.

**400W:** 400-Day Weight EBV (kg) is calculated similar to 200W from animals 301-500 days of age. Best estimate of an animal's genetic merit for yearling weight.

**600W:** 600-Day Weight EBV (kg) is calculated similar to 400W from animals 501-900 days of age. Best estimate of an animal's genetic merit for growth beyond yearling age.

**MCW:** Mature Cow Weight EBV (kg) is an estimate of the genetic differences in cow weight at five years of age.

#### MEAT YIELD:

**CWT:** Carcase Weight EBV (kg) estimates the genetic difference in carcase weight at a standard age of 650 days.

**EMA:** Eye Muscle Area EBV (cm<sup>2</sup>) estimates genetic differences in eye muscle area at the

12/13<sup>th</sup> rib site of a 300kg dressed carcass. More positive EBVs indicate better muscling on animals.

**RIB:** Rib Fat EBV (mm) estimates the genetic differences in fat depth at the 12/13<sup>th</sup> rib in a 300kg dressed carcass. More positive EBVs indicate more subcutaneous fat and earlier maturity.

**RUMP:** Rump Fat EBV (mm) estimates the genetic differences in fat depth at the P8 site of a 300kg dressed carcass. More positive EBVs indicate more subcutaneous fat and earlier maturity.

**RBV%:** Retail Beef Yield Percent EBV (%) represents total (boned out) meat yield as a percentage of a 300kg dressed carcass. A more positive EBV indicates higher percentage yield for the 300kg dressed carcass.

**IMF%:** Intra-muscular Fat Percent EBV (%) is an estimate of the genetic difference in the percentage of intra-muscular fat (marbling) at the 12/13<sup>th</sup> rib site in a 300kg dressed carcass. Depending on market targets, larger more positive values are generally more favourable.

### **SELECTION INDICES**

Shorthorn selection indices are calculated for two market specifications, namely, Self Replacing and Dairy. These Indices relate to typical commercial herds in New Zealand targeting these specifications.

Index values are reported as EBVs, in units of relative earning capacity (\$'s) for a given market. They reflect both the short-term profit generated by a sire through the sale of his progeny, and the longer-term profit generated by his daughters in a self-replacing cow herd (where applicable). A selection index combines the EBVs with economic information (costs and returns) for specific market and production systems to rank animals based on relative profit values. Note that different types of animals can give similar profit values, so consideration should be given to both the index and the component EBVs when selecting animals for a particular production system.

**Self Replacing Index (\$)** - Estimates the genetic differences between animals in net profitability per cow joined for an example commercial self replacing Shorthorn herd targeting the production of pasture finished steers. Steers are assumed marketed at 545 kg live weight (300 kg carcass weight and 10 mm P8 fat depth) at 18 months of age. Daughters are retained for breeding. This index is also suitable in situations where Shorthorn sires are used over mixed British breed cows.

**Dairy Index (\$)** - Estimates the genetic differences between animals in net profitability per cow joined for an example commercial dairy herd using Shorthorn bulls over dairy cows targeting the production of pasture finished dairy beef progeny. Steers and heifers are assumed marketed at 520 kg live weight (280 kg carcass weight and 6 P8 mm fat depth) at 20 months of age. All progeny are slaughtered with no replacement females being retained.

The Trans-Tasman Shorthorn GROUP BREEDPLAN Estimated Breeding Values contained in this sale catalogue were compiled by the Agricultural Business Research Institute (ABRI) from data supplied by the breeders. Neither the Shorthorn Society of Australia, the Beef Shorthorn Society of Australia, the New Zealand Beef Shorthorn Association nor the ABRI oversee or audit the collection of this data.

# Percentile bands for NZ Shorthorns - 2023 born calves

Percentile Band	Calving Ease DIR (%)	Calving Ease DTRS (%)	Gestation Length (days)	Birth Wt. (kg)	200 Day Wt (kg)	400 Day Wt (kg)	600 Day Wt (kg)	Mat Cow Wt (kg)	Milk (kg)	Scrotal Size (cm)	Days to Calving (days)	Carcase Wt (kg)	Eye Muscle Area (sq cm)	Rib Fat (mm)	Rump Fat (mm)	Retail Beef Yield (%)	IMF (%)	Self Replacing Index (\$)	Dairy Index (\$)
Top Value	+14.7	+10.2	-8.6	-3.5	+47	+69	+113	+91	+13	+3.3	-8.1	+53	+8.3	+2.2	+5.1	+2.5	+1.2	+188	+129
Top 1%	+12.0	+9.4	-6.3	-0.9	+41	+60	+85	+76	+11	+2.8	-5.5	+48	+7.2	+1.4	+3.1	+1.9	+1.0	+176	+112
Top 5%	+8.9	+7.4	-4.0	+0.3	+36	+52	+73	+68	+10	+2.4	-4.3	+43	+6.1	+0.8	+1.8	+1.6	+0.8	+157	+98
Top 10%	+7.4	+6.3	-3.5	+1.0	+35	+50	+68	+63	+9	+2.1	-3.7	+41	+5.8	+0.5	+1.4	+1.4	+0.8	+149	+90
Top 15%	+6.1	+5.5	-3.0	+1.4	+33	+48	+64	+60	+8	+2.0	-3.2	+39	+5.5	+0.4	+1.1	+1.3	+0.7	+142	+84
Top 20%	+5.4	+4.8	-2.7	+1.8	+32	+47	+62	+58	+8	+1.9	-2.8	+38	+5.4	+0.2	+0.9	+1.3	+0.7	+137	+80
Top 25%	+4.9	+4.2	-2.5	+2.1	+31	+45	+60	+56	+7	+1.8	-2.6	+38	+5.2	+0.1	+0.7	+1.2	+0.6	+132	+76
Top 30%	+4.1	+3.5	-2.3	+2.4	+31	+44	+58	+54	+7	+1.7	-2.4	+37	+5.0	+0.0	+0.5	+1.1	+0.6	+127	+73
Top 35%	+3.3	+3.0	-2.0	+2.6	+30	+43	+56	+52	+7	+1.7	-2.2	+36	+4.8	-0.1	+0.3	+1.1	+0.6	+124	+70
Top 40%	+2.5	+2.5	-1.8	+2.8	+29	+42	+55	+51	+6	+1.6	-2.0	+36	+4.6	-0.1	+0.2	+1.0	+0.6	+120	+67
Top 45%	+2.0	+2.1	-1.7	+3.1	+28	+41	+53	+49	+6	+1.5	-1.7	+35	+4.5	-0.2	+0.0	+0.9	+0.5	+117	+64
Top 50%	+1.5	+1.6	-1.5	+3.2	+28	+40	+52	+48	+6	+1.5	-1.5	+35	+4.4	-0.3	-0.1	+0.9	+0.5	+113	+62
Top 55%	+0.9	+1.2	-1.3	+3.4	+27	+39	+51	+46	+6	+1.4	-1.3	+34	+4.2	-0.3	-0.2	+0.8	+0.5	+109	+60
Top 60%	+0.5	+0.8	-1.2	+3.5	+27	+38	+49	+44	+6	+1.3	-1.2	+34	+4.1	-0.4	-0.3	+0.8	+0.5	+106	+57
Top 65%	+0.0	+0.4	-1.0	+3.7	+26	+37	+47	+42	+5	+1.3	-0.9	+33	+4.0	-0.4	-0.4	+0.7	+0.5	+102	+54
Top 70%	-0.5	+0.1	-0.8	+3.9	+25	+36	+45	+41	+5	+1.2	-0.8	+32	+3.8	-0.5	-0.6	+0.6	+0.4	+98	+52
Top 75%	-1.2	-0.4	-0.6	+4.2	+25	+35	+43	+39	+5	+1.1	-0.4	+32	+3.6	-0.6	-0.7	+0.6	+0.4	+94	+49
Top 80%	-2.0	-0.9	-0.4	+4.4	+23	+33	+41	+36	+5	+1.1	-0.2	+31	+3.4	-0.7	-0.9	+0.5	+0.4	+90	+45
Top 85%	-3.1	-1.6	-0.2	+4.6	+22	+31	+36	+33	+4	+1.0	+0.1	+30	+3.2	-0.8	-1.1	+0.4	+0.3	+84	+41
Top 90%	-4.9	-2.5	+0.1	+4.9	+20	+29	+34	+29	+4	+0.8	+0.4	+28	+2.9	-0.9	-1.3	+0.2	+0.3	+76	+31
Top 95%	-7.1	-4.4	+0.4	+5.4	+18	+25	+28	+23	+3	+0.6	+1.0	+26	+2.5	-1.1	-1.6	+0.1	+0.2	+62	+21
Top 99%	-14.0	-8.5	+1.0	+7.0	+13	+19	+17	+14	+2	+0.3	+2.0	+22	+1.6	-1.4	-2.5	-0.5	+0.1	+27	-10
Low Value	-21.6	-14.8	+3.6	+7.8	+10	+8	+8	+2	+1	-1.0	+3.1	+19	-0.3	-2.0	-3.1	-1.4	-0.1	-21	-45

This sale will be hosted by bidr® (bidr.co.nz) as a HYBRID ON-FARM auction, with online bidding and a live-stream available for online purchasers.

All intending online purchasers must register with bidr® using an account held with one of the bidr® partner agencies in advance of the sale date.

The bidr® team is available to assist intending purchasers with signing up and registering – please call 0800 TO BIDR (0800 86 2437), or email [enquiries@bidr.co.nz](mailto:enquiries@bidr.co.nz) for assistance at any point.

**Alternatively, contact your local bidr® representative:**

**Caitlin Barnett**

Sales & Operations Manager  
027 405 6156

**Bianca Perkins**

Business Development Coordinator  
027 732 0006

**Bruno Santos**

Upper North Island Territory Manager  
027 221 8276

**Olivia Manley**

Lower North Island Territory Manager  
027 348 6354

**Elle Woodgate**

Upper South Island Territory Manager  
027 340 5518

**Sam Murphy**

Lower South Island Territory Manager  
027 243 2736

## R2 Year Old Shorthorn Bulls

Lot 1 Tag No: 23 1	<b>GLENROSSIE GOLD 23001 210023001P</b>	Roan Born: 21/07/23
-----------------------	---	------------------------

HINEWAKA GOLD 8/16  
 Sire: HINEWAKA GOLD 71/18  
 HINEWAKA KARAKA 29/15  
 Animal: GLENROSSIE GOLD 23001  
 ROUGH RIDGE PRIMO 30  
 Dam: GLENROSSIE BONNIE 16091  
 GLENROSSIE BONNIE 12022

Roan  
 Red Lt White  
 Red  
 Roan  
 Roan  
 White  
 Red/Roan

CE DI	CE DT	GL	BW	200D	400D	600D	MCW	MILK
-1.4 33%	-1.6 26%	-0.9 27%	+5.9 58%	+37 66%	+58 63%	+80 70%	+76 53%	+5 39%
SS	CWT	EMA	RIB	RUMP	RBY	IMF	SR	DI
+1.8 68%	+46 52%	+6.3 48%	-0.3 56%	-0.6 57%	+1.0 51%	+0.8 38%	+\$123	+\$68
22/03/24	-	13/03/25	27/05/25	SS	RUMP	RIB	EMA	IMF
326kg	-	706kg	778kg	40cm	5mm	3mm	100cm2	5.1%

TRAITS OBSERVED: CE, 200D, 600D, SS, RIB, RUMP, EMA, IMF

PURCHASER.....PRICE \$.....

Lot 2 Tag No: 23 20	<b>GLENROSSIE GOLD 23020 210023020P</b>	Red/Roan Born: 10/08/23
------------------------	---	----------------------------

HINEWAKA GOLD 8/16  
 Sire: HINEWAKA GOLD 71/18  
 HINEWAKA KARAKA 29/15  
 Animal: GLENROSSIE GOLD 23020  
 ROUGH RIDGE ENHANCE 9  
 Dam: GLENROSSIE FLOWER 18041  
 GLENROSSIE FLOWER 13035

Roan  
 Red Lt White  
 Red  
 Red/Roan  
 Roan  
 White  
 White

CE DI	CE DT	GL	BW	200D	400D	600D	MCW	MILK
-1.2 32%	+1.6 25%	-1.0 29%	+7.1 58%	+44 66%	+63 63%	+101 69%	+85 52%	+7 37%
SS	CWT	EMA	RIB	RUMP	RBY	IMF	SR	DI
+1.9 68%	+50 51%	+5.0 48%	-0.1 56%	+0.3 56%	+0.6 51%	+0.4 38%	+\$148	+\$82
22/03/24	-	13/03/25	27/05/25	SS	RUMP	RIB	EMA	IMF
322kg	-	726kg	770kg	40cm	6mm	3mm	86cm2	3.5%

TRAITS OBSERVED: CE, 200D, 600D, SS, RIB, RUMP, EMA, IMF

PURCHASER.....PRICE \$.....



## R2 Year Old Shorthorn Bulls

Lot 3 Tag No: 23 3	<b>GLENROSSIE PARKINSON 23003 210023003P</b>	White Born: 01/08/23
-----------------------	--	-------------------------

BROWNS SPARTA 016  
Sire: GLENDHU PARKINSON 20 10  
GLENDHU LASSIE 14430  
Animal: GLENROSSIE PARKINSON 23003  
LOCHBURN HAMILTON 09031  
Dam: GLENROSSIE ROSEWOOD 13036  
GLENROSSIE ROSEWOOD 09 11

White  
White  
White  
White  
Red/Roan  
Red Ltl White  
Red Ltl White

CE DI	CE DT	GL	BW	200D	400D	600D	MCW	MILK
-0.9 28%	- -	-2.5 28%	+4.4 54%	+31 63%	+49 60%	+66 68%	+65 50%	+3 38%
SS	CWT	EMA	RIB	RUMP	RBY	IMF	SR	DI
+1.1 65%	+43 50%	+8.3 44%	-1.0 54%	-2.1 55%	+2.5 48%	+0.4 36%	+\$106	+\$64
22/03/24	-	13/03/25	27/05/25	SS	RUMP	RIB	EMA	IMF
300kg	-	634kg	696kg	36cm	3mm	2mm	101cm2	4.7%

TRAITS OBSERVED: CE, 200D, 600D, SS, RIB, RUMP, EMA, IMF

PURCHASER..... PRICE \$.....

Lot 4 Tag No: 23 16	<b>GLENROSSIE GOLD 23016 210023016P</b>	Roan Born: 09/08/23
------------------------	---	------------------------

HINEWAKA GOLD 8/16  
Sire: HINEWAKA GOLD 71/18  
HINEWAKA KARAKA 29/15  
Animal: GLENROSSIE GOLD 23016  
GLENROSSIE HAMILTON 12061  
Dam: GLENROSSIE BUTTERCUP 15009  
GLENROSSIE BUTTERCUP 10024

Roan  
Red Ltl White  
Red  
Roan  
Roan  
White  
Roan

CE DI	CE DT	GL	BW	200D	400D	600D	MCW	MILK
0.0 33%	-0.8 27%	-0.7 26%	+4.8 59%	+31 67%	+48 65%	+64 71%	+62 54%	+4 42%
SS	CWT	EMA	RIB	RUMP	RBY	IMF	SR	DI
+2.0 69%	+39 54%	+5.6 49%	-0.2 57%	-0.2 57%	+0.9 52%	+0.8 39%	+\$116	+\$62
22/03/24	-	13/03/25	27/05/25	SS	RUMP	RIB	EMA	IMF
290kg	-	650kg	696kg	41cm	5mm	2mm	93cm2	4.3%

TRAITS OBSERVED: CE, 200D, 600D, SS, RIB, RUMP, EMA, IMF

PURCHASER..... PRICE \$.....

## R2 Year Old Shorthorn Bulls

Lot 5 Tag No: 23 28	<b>GLENROSSIE GOLD 23028 210023028P</b>	Red ltl White Born: 13/08/23
------------------------	---	---------------------------------

<p style="text-align: center;">HINEWAKA GOLD 8/16</p> <p>Sire: HINEWAKA GOLD 71/18</p> <p style="text-align: center;">HINEWAKA KARAKA 29/15</p> <p>Animal: GLENROSSIE GOLD 23028</p> <p style="text-align: center;">ROUGH RIDGE PRIMO 30</p> <p>Dam: GLENROSSIE BONNIE 16072</p> <p style="text-align: center;">GLENROSSIE BONNIE 12059</p>	<p>Roan</p> <p>Red Ltl White</p> <p>Red</p> <p>Red Ltl White</p> <p>Roan</p> <p>Red/Roan</p> <p>Red</p>
---	---

CE DI	CE DT	GL	BW	200D	400D	600D	MCW	MILK
-1.2 33%	-1.1 26%	-1.0 27%	+5.1 59%	+34 67%	+51 64%	+68 70%	+67 53%	+7 42%
SS	CWT	EMA	RIB	RUMP	RBY	IMF	SR	DI
+1.2 69%	+40 52%	+4.9 48%	+0.3 57%	+0.6 57%	+0.2 51%	+0.8 39%	+\$102	+\$57
22/03/24	-	13/03/25	27/05/25	SS	RUMP	RIB	EMA	IMF
330kg	-	654kg	710kg	38cm	6mm	3mm	92cm2	5.0%

TRAITS OBSERVED: CE, 200D, 600D, SS, RIB, RUMP, EMA, IMF

PURCHASER..... PRICE \$.....

Lot 6 Tag No: 23 6	<b>GLENROSSIE GOLD 23006 210023006P</b>	Red Little White Born: 03/08/23
-----------------------	---	------------------------------------

<p style="text-align: center;">HINEWAKA GOLD 8/16</p> <p>Sire: HINEWAKA GOLD 71/18</p> <p style="text-align: center;">HINEWAKA KARAKA 29/15</p> <p>Animal: GLENROSSIE GOLD 23006</p> <p style="text-align: center;">CORSOCK DAZZLER 11384</p> <p>Dam: GLENROSSIE BONNIE 15012</p> <p style="text-align: center;">GLENROSSIE BONNIE 05 31</p>	<p>Roan</p> <p>Red Ltl White</p> <p>Red</p> <p>Red Ltl White</p> <p>White</p> <p>Roan</p> <p>Red Ltl White</p>
--	--

CE DI	CE DT	GL	BW	200D	400D	600D	MCW	MILK
-0.9 34%	-0.6 28%	-0.5 28%	+4.6 60%	+29 68%	+45 65%	+52 71%	+51 54%	+7 42%
SS	CWT	EMA	RIB	RUMP	RBY	IMF	SR	DI
+1.7 69%	+34 54%	+4.7 49%	-0.2 57%	-0.2 57%	+0.7 51%	+0.8 39%	+\$89	+\$46
22/03/24	-	13/03/25	27/05/25	SS	RUMP	RIB	EMA	IMF
304kg	-	608kg	668kg	36cm	5mm	2mm	92cm2	4.5%

TRAITS OBSERVED: CE, 200D, 600D, SS, RIB, RUMP, EMA, IMF

PURCHASER..... PRICE \$.....

## R2 Year Old Shorthorn Bulls

Lot 7 Tag No: 23 15	<b>GLENROSSIE GOLD 23015</b> <b>210023015P</b>	Red Little White Born: 08/08/23
------------------------	---	------------------------------------

Sire: HINEWAKA GOLD 8/16 HINEWAKA GOLD 71/18 HINEWAKA KARAKA 29/15 Animal: GLENROSSIE GOLD 23015 ROUGH RIDGE ENHANCE 9 Dam: GLENROSSIE HEATHER 18058 GLENROSSIE HEATHER 13017	Roan Red Ltl White Red Red Ltl White Roan Red Ltl White Red Ltl White
---	---

CE DI	CE DT	GL	BW	200D	400D	600D	MCW	MILK
-2.4 33%	+1.5 26%	-1.5 32%	+6.1 59%	+41 66%	+59 63%	+87 70%	+76 53%	+7 38%
SS	CWT	EMA	RIB	RUMP	RBY	IMF	SR	DI
+1.4 68%	+46 52%	+4.7 48%	-0.1 57%	0.0 57%	+0.3 51%	+0.8 39%	+\$129	+\$65
22/03/24	-	13/03/25	27/05/25	SS	RUMP	RIB	EMA	IMF
324kg	-	690kg	714kg	38cm	5mm	3mm	88cm2	4.9%

TRAITS OBSERVED: CE, 200D, 600D, SS, RIB, RUMP, EMA, IMF

PURCHASER..... PRICE \$.....

Lot 8 Tag No: 23 2	<b>GLENROSSIE GOLD 23002</b> <b>210023002P</b>	Red Little White Born: 30/07/23
-----------------------	---	------------------------------------

Sire: HINEWAKA GOLD 8/16 HINEWAKA GOLD 71/18 HINEWAKA KARAKA 29/15 Animal: GLENROSSIE GOLD 23002 ROUGH RIDGE PRIMO 30 Dam: GLENROSSIE BUTTERCUP 16073 GLENROSSIE BUTTERCUP 12003	Roan Red Ltl White Red Red Ltl White Roan Roan Roan
--	---

CE DI	CE DT	GL	BW	200D	400D	600D	MCW	MILK
+0.3 32%	+2.6 26%	-1.3 26%	+3.7 59%	+27 67%	+43 64%	+53 70%	+55 53%	+5 42%
SS	CWT	EMA	RIB	RUMP	RBY	IMF	SR	DI
+0.7 69%	+34 52%	+4.4 49%	+0.5 57%	+1.2 57%	-0.1 52%	+1.0 39%	+\$101	+\$53
22/03/24	-	13/03/25	27/05/25	SS	RUMP	RIB	EMA	IMF
296kg	-	626kg	662kg	36cm	6mm	4mm	93cm2	5.4%

TRAITS OBSERVED: CE, 200D, 600D, SS, RIB, RUMP, EMA, IMF

PURCHASER..... PRICE \$.....

## R2 Year Old Shorthorn Bulls

Lot 9 Tag No: 23 11	<b>GLENROSSIE NEAT 23011 210023011P</b>	Roan Born: 04/08/23
------------------------	---	------------------------

ROYALLA QUANDIALLA J209  
 Sire: POLLDAL NEAT N38 (IMP AUS)  
 POLLDAL DUCHESS J121  
 Animal: GLENROSSIE NEAT 23011  
 BAYVIEW ARCHER M15  
 Dam: GLENROSSIE BRENDA 20016  
 GLENROSSIE BRENDA 17013

Red  
 Roan  
 White  
 Roan  
 Red  
 Red Ltl White  
 Red Ltl White

CE DI	CE DT	GL	BW	200D	400D	600D	MCW	MILK
-0.2 37%	+1.2 27%	-1.5 39%	+2.9 59%	+27 64%	+39 61%	+54 69%	+46 53%	+6 32%
SS	CWT	EMA	RIB	RUMP	RBY	IMF	SR	DI
+1.7 68%	+35 51%	+4.1 49%	+0.7 57%	+1.6 57%	+0.2 51%	+0.7 40%	+\$122	+\$53
22/03/24	-	13/03/25	27/05/25	SS	RUMP	RIB	EMA	IMF
294kg	-	628kg	672kg	38cm	6mm	3mm	84cm2	4.2%

TRAITS OBSERVED: CE, 200D, 600D, SS, RIB, RUMP, EMA, IMF

PURCHASER..... PRICE \$.....

Lot 10 Tag No: 23 22	<b>GLENROSSIE NEAT 23022 210023022P</b>	Roan Born: 10/08/23
-------------------------	---	------------------------

ROYALLA QUANDIALLA J209  
 Sire: POLLDAL NEAT N38 (IMP AUS)  
 POLLDAL DUCHESS J121  
 Animal: GLENROSSIE NEAT 23022  
 BAYVIEW ARCHER M15  
 Dam: GLENROSSIE ROSEWOOD 20037  
 GLENROSSIE ROSEWOOD 17059

Red  
 Roan  
 White  
 Roan  
 Red  
 White  
 Red/Roan

CE DI	CE DT	GL	BW	200D	400D	600D	MCW	MILK
-7.4 37%	-4.3 27%	-1.7 39%	+3.3 59%	+29 64%	+42 61%	+58 69%	+50 52%	+4 29%
SS	CWT	EMA	RIB	RUMP	RBY	IMF	SR	DI
+2.4 68%	+36 51%	+4.5 49%	-0.2 57%	-0.1 57%	+0.9 51%	+0.5 40%	+\$93	+\$19
22/03/24	-	13/03/25	27/05/25	SS	RUMP	RIB	EMA	IMF
266kg	-	612kg	652kg	40cm	3mm	2mm	80cm2	2.8%

TRAITS OBSERVED: CE, 200D, 600D, SS, RIB, RUMP, EMA, IMF

PURCHASER..... PRICE \$.....

## R2 Year Old Shorthorn Bulls

Lot 11 Tag No: 23 59	<b>GLENROSSIE UNIQUE 23059 210023059P</b>	Roan Born: 01/09/23
-------------------------	---	------------------------

BAYVIEW UNIQUE K11 (P)                      Roan  
Sire: BROWNS UNIQUE 010                      Red/Roan  
OAKVIEW LADY 519                      Red  
Animal: GLENROSSIE UNIQUE 23059                      Roan  
GLENROSSIE HAMILTON 12061                      Roan  
Dam: GLENROSSIE BRENDA 15015                      Roan  
GLENROSSIE BRENDA 09 51                      Roan

CE DI	CE DT	GL	BW	200D	400D	600D	MCW	MILK
+0.3 34%	+0.3 28%	+0.5 37%	+4.0 58%	+24 66%	+30 63%	+45 70%	+52 53%	+4 42%
SS	CWT	EMA	RIB	RUMP	RBY	IMF	SR	DI
+0.3 68%	+31 52%	+4.0 48%	+0.2 56%	+1.1 56%	+0.4 50%	+0.6 39%	+\$62	+\$45
22/03/24	-	13/03/25	27/05/25	SS	RUMP	RIB	EMA	IMF
290kg	-	628kg	660kg	37cm	6mm	3mm	89cm2	4.2%

TRAITS OBSERVED: CE, 200D, 600D, SS, RIB, RUMP, EMA, IMF

PURCHASER..... PRICE \$.....

Lot 12 Tag No: 23 75	<b>GLENROSSIE UNIQUE 23075 210023075P</b>	Roan Born: 12/09/23
-------------------------	---	------------------------

BAYVIEW UNIQUE K11 (P)                      Roan  
Sire: BROWNS UNIQUE 010                      Red/Roan  
OAKVIEW LADY 519                      Red  
Animal: GLENROSSIE UNIQUE 23075                      Roan  
ROUGH RIDGE ENHANCE 9                      Roan  
Dam: GLENROSSIE HEATHER 18057                      White  
GLENROSSIE HEATHER 13019                      White

CE DI	CE DT	GL	BW	200D	400D	600D	MCW	MILK
-0.3 33%	+1.1 27%	+0.2 39%	+5.1 57%	+31 65%	+39 62%	+61 69%	+62 52%	+5 37%
SS	CWT	EMA	RIB	RUMP	RBY	IMF	SR	DI
+0.8 68%	+36 51%	+4.1 48%	-0.1 56%	+0.6 56%	+0.7 50%	+0.3 39%	+\$80	+\$54
22/03/24	-	13/03/25	27/05/25	SS	RUMP	RIB	EMA	IMF
262kg	-	602kg	654kg	38cm	5mm	3mm	85cm2	3.3%

TRAITS OBSERVED: CE, 200D, 600D, SS, RIB, RUMP, EMA, IMF

PURCHASER..... PRICE \$.....

## R2 Year Old Shorthorn Bulls

Lot 13 Tag No: 23 36	<b>GLENROSSIE PHANTOM 23036 210023036P</b>	Red Little White Born: 17/08/23
-------------------------	--	------------------------------------

MURIDALE IRON MAN 4X  
Sire: MURIDALE PHANTOM 10F (IMP CAN)  
MURIDALE GOOSE 76Y  
Animal: GLENROSSIE PHANTOM 23036  
LONGVIEW MEATPACKER16062  
Dam: GLENROSSIE BUTTERCUP 20039  
GLENROSSIE BUTTERCUP 16073

Roan  
Roan  
Roan  
Red Ltl White  
Roan  
Roan  
Roan

CE DI	CE DT	GL	BW	200D	400D	600D	MCW	MILK
+5.3 35%	- -	-2.7 41%	+2.0 60%	+22 64%	+34 62%	+45 69%	+46 51%	+4 26%
SS	CWT	EMA	RIB	RUMP	RBY	IMF	SR	DI
+2.1 67%	+29 50%	+1.7 47%	-1.0 55%	-0.6 55%	+0.7 48%	+0.4 37%	+\$125	+\$75
22/03/24	-	13/03/25	27/05/25	SS	RUMP	RIB	EMA	IMF
240kg	-	602kg	628kg	38cm	3mm	2mm	77cm2	4.4%

TRAITS OBSERVED: CE, 200D, 600D, SS, RIB, RUMP, EMA, IMF

PURCHASER..... PRICE \$.....

Lot 14 Tag No: 23 23	<b>GLENROSSIE GOLD 23023 210023023P</b>	Red Born: 14/08/23
-------------------------	---	-----------------------

HINEWAKA GOLD 8/16  
Sire: HINEWAKA GOLD 71/18  
HINEWAKA KARAKA 29/15  
Animal: GLENROSSIE GOLD 23023  
GLENROSSIE HAMILTON 12061  
Dam: GLENROSSIE HEATHER 16012  
GLENROSSIE HEATHER 07 47

Roan  
Red Ltl White  
Red  
Red  
Roan  
Red/Roan  
Red

CE DI	CE DT	GL	BW	200D	400D	600D	MCW	MILK
-0.1 33%	+0.2 27%	-0.8 28%	+4.4 49%	+32 57%	+44 64%	+54 70%	+57 53%	+8 41%
SS	CWT	EMA	RIB	RUMP	RBY	IMF	SR	DI
+1.0 69%	+36 53%	+5.6 49%	0.0 57%	-0.2 57%	+0.6 52%	+0.9 39%	+\$91	+\$53
22/03/24	-	13/03/25	27/05/25	SS	RUMP	RIB	EMA	IMF
332kg	-	614kg	636kg	37cm	4mm	3mm	90cm2	4.6%

TRAITS OBSERVED: CE, 200D, 600D, SS, RIB, RUMP, EMA, IMF

PURCHASER..... PRICE \$.....

## R2 Year Old Shorthorn Bulls

Lot 15 Tag No: 23 45	<b>GLENROSSIE PARKINSON 23045 210023045P</b>	Red Little White Born: 24/08/23
-------------------------	--	------------------------------------

BROWNS SPARTA 016  
Sire: GLENDHU PARKINSON 20 10  
GLENDHU LASSIE 14430  
Animal: GLENROSSIE PARKINSON 23045  
GLENROSSIE SENATOR 11 32  
Dam: GLENROSSIE JILL 14020  
GLENROSSIE JILL 08 71

White  
White  
White  
Red Ltl White  
Red/Roan  
Roan  
Red

CE DI	CE DT	GL	BW	200D	400D	600D	MCW	MILK
+1.1 25%	- -	- -	+1.8 54%	+18 63%	+29 60%	+35 68%	+38 51%	+1 40%
SS	CWT	EMA	RIB	RUMP	RBY	IMF	SR	DI
+0.2 64%	+30 50%	+6.4 63%	+0.3 53%	+0.7 54%	+1.2 46%	+0.8 35%	+\$91	+\$49
22/03/24	-	13/03/25	27/05/25	SS	RUMP	RIB	EMA	IMF
244kg	-	584kg	626kg	35cm	5mm	3mm	95cm2	4.9%

TRAITS OBSERVED: CE, 200D, 600D, SS, RIB, RUMP, EMA, IMF

PURCHASER..... PRICE \$.....

Lot 16 Tag No: 23 46	<b>GLENROSSIE PARKINSON 23046 210023046P</b>	Red Little White Born: 28/08/23
-------------------------	--	------------------------------------

BROWNS SPARTA 016  
Sire: GLENDHU PARKINSON 20 10  
GLENDHU LASSIE 14430  
Animal: GLENROSSIE PARKINSON 23046  
LONGVIEW MEATPACKER16062  
Dam: GLENROSSIE BONNIE 19076  
GLENROSSIE BONNIE 15060

White  
White  
White  
Red Ltl White  
Roan  
Roan  
Red/Roan

CE DI	CE DT	GL	BW	200D	400D	600D	MCW	MILK
- -	- -	- -	+2.9 52%	+24 62%	+39 59%	+47 67%	+42 49%	+4 33%
SS	CWT	EMA	RIB	RUMP	RBY	IMF	SR	DI
+2.3 63%	+33 48%	+5.7 42%	-0.4 52%	-0.4 53%	+1.7 46%	+0.5 35%	+\$107	+\$39
22/03/24	-	13/03/25	27/05/25	SS	RUMP	RIB	EMA	IMF
260kg	-	564kg	600kg	39cm	4mm	2mm	90cm2	3.9%

TRAITS OBSERVED: CE, 200D, 600D, SS, RIB, RUMP, EMA, IMF

PURCHASER..... PRICE \$.....

## R2 Year Old Shorthorn Bulls

Lot 17 Tag No: 23 67	<b>GLENROSSIE PAPALII 23067 210023067P</b>	Red/Roan Born: 05/09/23
-------------------------	--	----------------------------

BROWNS SPARTA 016  
Sire: GLENDHU PAPALII 20 17  
GLENDHU DUCHESS 14414  
Animal: GLENROSSIE PAPALII 23067  
ROUGH RIDGE ENHANCE 9  
Dam: GLENROSSIE BRENDA 20018  
GLENROSSIE BRENDA 09 51

White  
Red/Roan  
Roan  
Red/Roan  
Roan  
Roan  
Roan

CE DI	CE DT	GL	BW	200D	400D	600D	MCW	MILK
-	-	-1.2	+3.3	+25	+33	+52	+49	+5
-	-	25%	52%	60%	58%	66%	48%	32%
SS	CWT	EMA	RIB	RUMP	RBY	IMF	SR	DI
+0.5 63%	+34 48%	+4.0 44%	-0.6 53%	-0.7 54%	+1.1 47%	+0.5 35%	+\$88	+\$54
22/03/24	-	13/03/25	27/05/25	SS	RUMP	RIB	EMA	IMF
230kg	-	580kg	644kg	35cm	4mm	2mm	77cm2	5.7%

TRAITS OBSERVED: CE, 200D, 600D, SS, RIB, RUMP, EMA, IMF

PURCHASER..... PRICE \$.....

Lot 18 Tag No: 23 80	<b>GLENROSSIE PARKINSON 23080 210023080P</b>	Red Little White Born: 28/09/23
-------------------------	--	------------------------------------

BROWNS SPARTA 016  
Sire: GLENDHU PARKINSON 20 10  
GLENDHU LASSIE 14430  
Animal: GLENROSSIE PARKINSON 23080  
GLENROSSIE PRIMO 16077  
Dam: GLENROSSIE HEATHER 19030  
GLENROSSIE HEATHER 08 39

White  
White  
White  
Red Ltl White  
Roan  
Roan  
Red and White

CE DI	CE DT	GL	BW	200D	400D	600D	MCW	MILK
-	-	-	+4.4	+30	+46	+67	+59	+6
-	-	-	52%	61%	58%	66%	49%	33%
SS	CWT	EMA	RIB	RUMP	RBY	IMF	SR	DI
+1.1 63%	+40 48%	+5.9 41%	-0.1 52%	+0.1 53%	+1.4 45%	+0.3 34%	+\$119	+\$68
22/03/24	-	13/03/25	27/05/25	SS	RUMP	RIB	EMA	IMF
238kg	-	594kg	628kg	36cm	5mm	2mm	87cm2	3.1%

TRAITS OBSERVED: CE, 200D, 600D, SS, RIB, RUMP, EMA, IMF

PURCHASER..... PRICE \$.....



## R2 Year Old Santa Gertrudis Bulls

Lot 19 Tag No: 23 101	<b>GLENROSSIE MORRIS U23101 POLLED</b>	Tattoo: OAC U101 Born: 10/08/23
--------------------------	--	------------------------------------

WACO ADDICTIVE F1090 (PS)

Sire:WACO MORRIS M192 (P)

WACO F329

Animal: GLENROSSIE MORRIS U23101

BEN LOMOND JDAK1329

Dam: GLENROSSIE R20107

GLENROSSIE N171110

13/03/25	27/05/25	SS	RUMP	RIB	EMA	IMF
530kg	562kg	38cm	5mm	2mm	81cm2	3.7%

PURCHASER.....

PRICE \$.....

Lot 20 Tag No: 23 106	<b>GLENROSSIE MORRIS U23106 POLLED</b>	Tattoo: OAC U106 Born: 06/09/23
--------------------------	--	------------------------------------

WACO MORRIS M192 (P)

Sire: GLENROSSIE MORRIS R20103

GLENROSSIE N17105

Animal: GLENROSSIE MORRIS U23106

BEN LOMOND JDAK1329

DAM: GLENROSSIE R20121

GLENROSSIE J13126

13/03/25	27/05/25	SS	RUMP	RIB	EMA	IMF
524kg	582kg	35cm	3mm	2mm	87cm2	2.4%

PURCHASER.....

PRICE \$.....

## R2 Year Old Santa Gertrudis Bulls

Lot 21 Tag No: 23 124	<b>GLENROSSIE U23124 POLLED</b>	Tattoo: OAC U124 Born: 01/11/23
--------------------------	-------------------------------------	------------------------------------

WACO MORRIS M192 (P)  
Sire: GLENROSSIE MORRIS R20103  
GLENROSSIE N17105  
Animal: GLENROSSIE MORRIS U23124  
BEN LOMOND JDAK1329  
Dam: GLENROSSIE Q19126  
GLENROSSIE K14109

13/03/25	27/05/25	SS	RUMP	RIB	EMA	IMF
522kg	566kg	34cm	3mm	2mm	73cm2	2.7%

PURCHASER..... PRICE \$.....

Lot 22 Tag No: 23 105	<b>GLENROSSIE U23105 HORNED</b>	Tattoo: OAC U105 Born: 25/08/23
--------------------------	-------------------------------------	------------------------------------

WACO ADDICTIVE F1090 (PS)  
Sire:WACO MORRIS M192 (P)  
WACO F329  
Animal: GLENROSSIE MORRIS U23105  
BEN LOMOND JDAK1329  
Dam: GLENROSSIE R20125  
GLENROSSIE J13117

13/03/25	27/05/25	SS	RUMP	RIB	EMA	IMF
562kg	606kg	38cm	4mm	2mm	79cm2	3.0%

PURCHASER..... PRICE \$.....

### **R2 Year Old Santa Gertrudis Bulls**

Lot 23 Tag No: 23 110	<b>GLENROSSIE U23110 POLLED</b>	Tattoo: OAC U110 Born: 30/09/23
--------------------------	-------------------------------------	------------------------------------

WACO MORRIS M192 (P)  
Sire: GLENROSSIE MORRIS R20103  
GLENROSSIE N17105  
Animal: GLENROSSIE MORRIS U23110  
GLENROSSIE MAXIMUS J101  
Dam: GLENROSSIE N17109  
GLENROSSIE C07115

13/03/25	27/05/25	SS	RUMP	RIB	EMA	IMF
490kg	516kg	33cm	6mm	2mm	74cm2	3.8%

PURCHASER..... PRICE \$.....

Lot 24 Tag No: 23 118	<b>GLENROSSIE U23118 POLLED</b>	Tattoo: OAC U118 Born: 23/10/23
--------------------------	-------------------------------------	------------------------------------

WACO MORRIS M192 (P)  
Sire: GLENROSSIE MORRIS R20103  
GLENROSSIE N17105  
Animal: GLENROSSIE MORRIS U23118  
BEN LOMOND JDAK1329  
Dam: GLENROSSIE Q19108  
GLENROSSIE L15120

13/03/25	27/05/25	SS	RUMP	RIB	EMA	IMF
474kg	508kg	34cm	4mm	2mm	81cm2	3.3%

PURCHASER..... PRICE \$.....

## PURCHASER INSTRUCTION SLIP FOR DELIVERY ONLY

Name: \_\_\_\_\_

Business name: \_\_\_\_\_

Postal address: \_\_\_\_\_

\_\_\_\_\_

Delivery address: \_\_\_\_\_

\_\_\_\_\_

Phone: \_\_\_\_\_ NAIT number: \_\_\_\_\_

Name of person receiving delivery of bulls: \_\_\_\_\_

Phone number for person receiving bulls: \_\_\_\_\_

Lot numbers purchased: \_\_\_\_\_

Any delivery instructions: \_\_\_\_\_

\_\_\_\_\_

\_\_\_\_\_

There is a separate form for insurance included in this catalogue. Please ensure that you fill in that form if you wish to insure your bull.

This form goes to the vendors to organise transport.

Thank you for supporting our bull sale.

## FMG Premier Bull Sale Insurance Form

### What is FMG Premier Bull Insurance?

On receiving a completed FMG Premier Bull Sale Insurance form, FMG provides its existing FMG clients with an active policy 14 days free insurance for bulls purchased up to \$50,000. For bulls purchased over \$50,000, please contact an FMG representative.

### What is the length of cover?

Your specified bull(s) will be insured for 14 days once you have fully completed this form and it's received by an FMG representative. If you would like a longer period of cover, simply tick the Cover extension box below to extend your Premier Bull Insurance to 12 months. The specified bull(s) is then insured for the next 12 months at **7.6%** of the purchase price.

FMG will invoice you for this additional cover.

### What are the benefits?

✓ <b>Infertility</b>	Cover if your specified bull has to be euthanised due to permanent infertility caused by certain accidents, disease, injury, or illness.
✓ <b>Theft or death</b>	Cover for your specified bull for theft or death caused by certain accidents, disease, injury, or illness (including while in transit anywhere in New Zealand).
✓ <b>Vet costs</b>	Cover up to \$500 for treatment of your specified bull to prevent death.

### What will FMG pay?

FMG will pay the fair market value of your specified bull, less any amount you receive for the sale of the carcass, up to the amount shown on the insurance certificate.



## Apply

Please fill in this form as soon as you have purchased your new bull(s) and hand it to your FMG representative. This form **MUST** be fully completed and you have to be an existing FMG client with an active policy to be eligible for the 14 days free Premier Bull Sale Insurance.

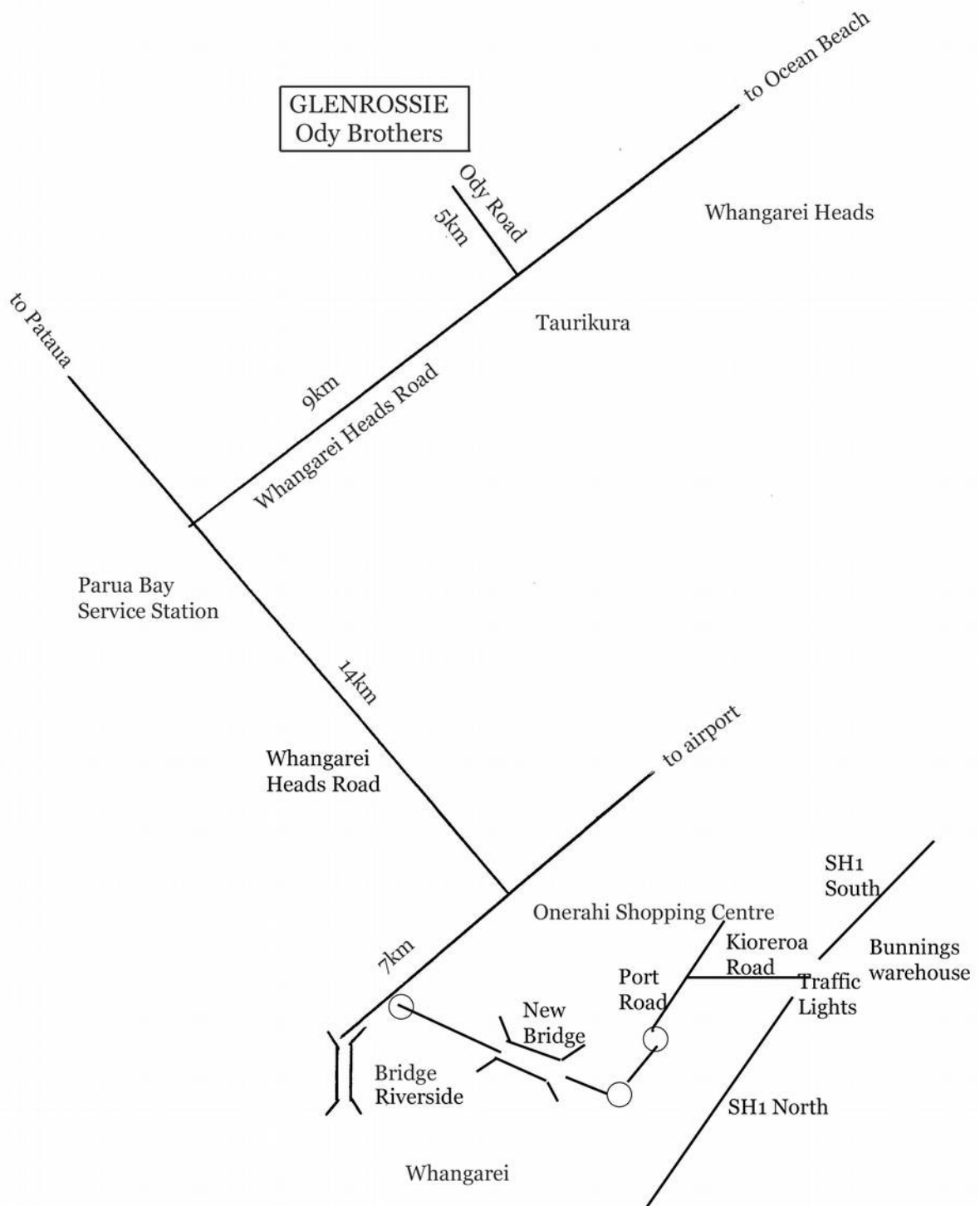
Purchaser full name:		FMG Account Number:		
Purchaser's address:				
Purchaser's phone:		Purchaser's email:		
Agent arranging insurance on behalf of the purchaser? Provide your full name:				
Lot:	Tag:	\$	Breed:	DOB:

<b>Cover extension</b>	
<input type="checkbox"/>	Tick here to extend your Bull Insurance to 12 months @ 7.6% of the purchase price of your bull. <i>This will extend the cover beyond the initial 14 days free cover for the remaining period of 12 months.</i>

NO VERBAL INSTRUCTIONS WILL BE ACCEPTED	Signature of Purchaser or Agent:	Date:     /     /
<p><b>Disclaimer</b> Please note this is only a summary of the product and is subject to our specific product documentation. For full details, you should refer to the policy document. You can get these documents, and any other information you need, from your FMG representative, by calling us or visiting, <a href="http://fmg.co.nz/livestockpolicy">fmg.co.nz/livestockpolicy</a></p> <p><b>Privacy</b> FMG is collecting your personal information in order to provide you with the insurance you are requesting. The information is collected and held by FMG, at 292 Church St, Palmerston North. Contact us if you have any questions or concerns, want access to the information we have about you, or you need us to update your information.</p>		



For GPS and Google Maps: 405 Ody Road, Whangarei Heads



When driving through Whangarei follow signs to the airport, Onerahi, Parua Bay, Whangarei Heads, and Ocean Beach.

Mud map – not drawn to scale